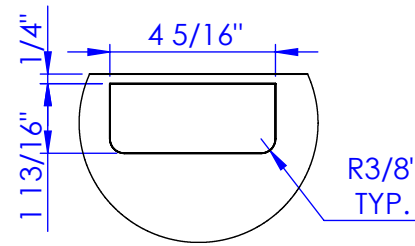
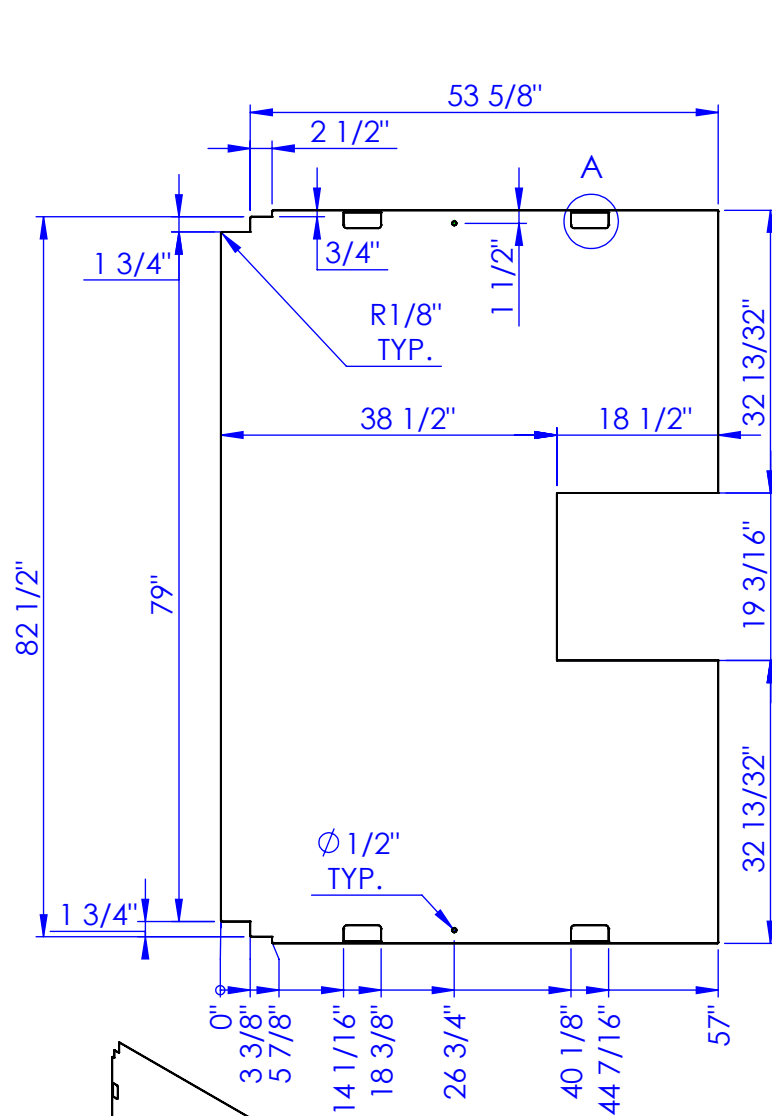
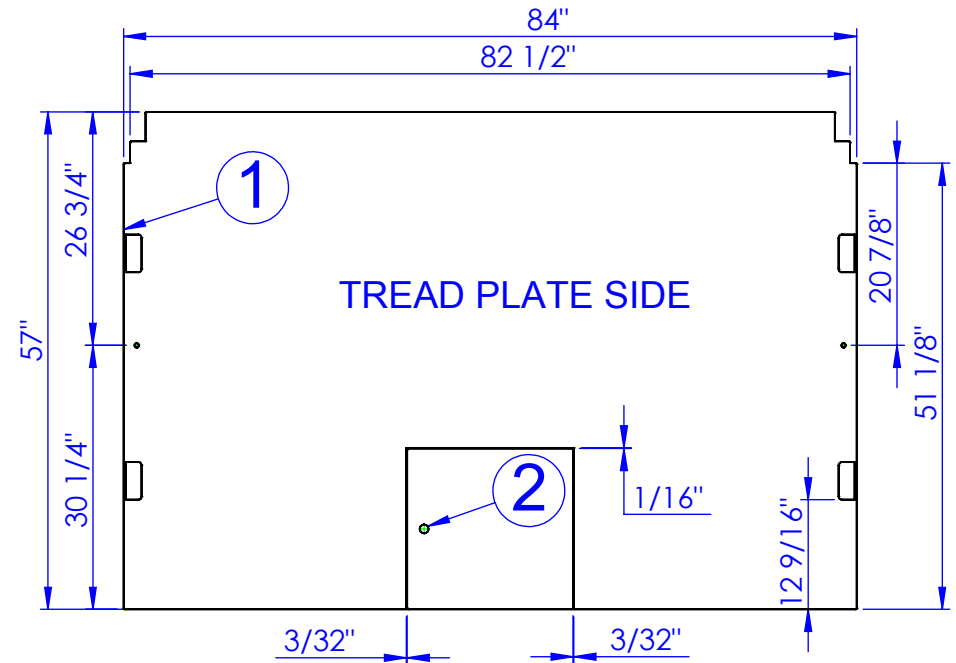
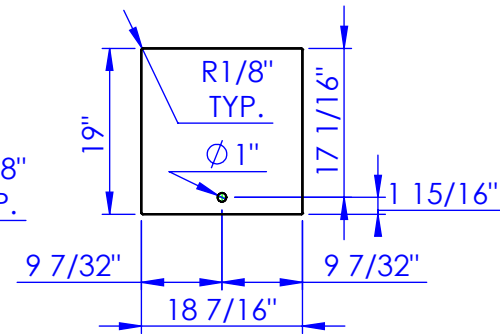


ITEM NO.	PART NUMBER	DESCRIPTION	MATERIAL	QTY.
1	FP-APEX-201	FRONT FLOOR 200 APEX	1/8" FLOOR PLATE	1
2	FP-PS-FLPL-LID	PS LID	1/8" FLOOR PLATE	1

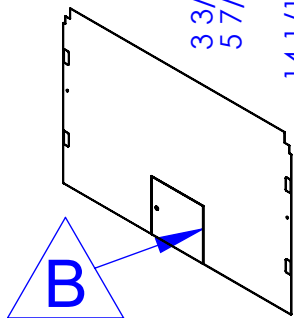
REVISIONS		DATE	APPROVED
REV.	DESCRIPTION		
B	REV. STAKE POCKET SIZE	12/22/11	



DETAIL A
SCALE 1 : 5



NOTE:
1. EDGES MUST BE COMMON BETWEEN FLOOR & DOOR.
TO INSURE PATTERN MATCH AT ASSEMBLY.



PROPRIETARY AND CONFIDENTIAL
THE INFORMATION CONTAINED IN THIS
DRAWING IS THE SOLE PROPERTY OF TRIPLE
C INC. ANY REPRODUCTION IN PART OR
AS A WHOLE WITHOUT THE WRITTEN
PERMISSION OF TRIPLE C INC. IS PROHIBITED.

DIMENSIONS ARE IN INCHES TOLERANCES: FRACTIONAL $\pm 1/16$ ANGULAR: MACH ± 1 BEND \pm TWO PLACE DECIMAL ± 010 THREE PLACE DECIMAL ± 005	
MATERIAL	1/8" FLOOR PLATE
DO NOT SCALE DRAWING	

NAME	DATE
DRAWN HEATH	12/22/2011
PART #	FP-APEX-201
ASM #	
COMMENTS:	
FRONT FLOOR, 200 APEX	

P.O. BOX 248,
SABETHA, KS 66534

TRIPLE C
INC.

SIZE	DWG. NO.	REV.
A	00-2210 B	B
SCALE: 1:22	WEIGHT:	SHEET 1 OF 1